

Stourbridge Glass Museum – how it came into being.

The remarkable tale of the period from the formation of BGF in 2010 to SGM official opening in 2013.
Now available direct from the museum. All proceeds to BGF.

Edition: 242
Dated: 9.4.24

Boo-hoo, sob-sob, it's cancelled

Very sad to bring you the news that due to unforeseen circumstances our *Gala Evening* on the 19th April has had to be postponed for now. This is most unfortunate since we were really looking forward to bringing on a real humdinger of a show. But we're not done yet! Expect other versions of *Big Bash* in due course and keep tabs with us via here or our *What's On At SGM* for details.

WHAT'S ON AT SGM

Full details of our packed programme of events are contained in our brochure (available free of charge from the Museum and other local outlets) or via the Stourbridge Glass Museum website by clicking here: <https://www.stourbridgeglassmuseum.org.uk/events/>

CGS updates

The Contemporary Glass Society www.cgs.org.uk have advised us of some forthcoming events in their 2024 calendar together with information for prospective entrants or participants:

- *Thanks for the Memory*, International Festival of Glass, 23rd – 28th September. More [here](#)
- *Discovery Day*, University of Sunderland, 20th April. Info & tickets [here](#)
- *Amanda Moriarty Memorial Prize*. Information and application [here](#)

Dan's your man

Entertainer Dan Whitehouse is kicking off his 2024 *A Night Of Glass* tour with a 'Black Country Special' at Katie's Secret Garden (Katie Fitzgerald's) Stourbridge on Wednesday 24th April.

His community project, *The Brierley Hill Song Book*, is part of the High Street regeneration funded by Dudley Gov and Historic England. [Here](#) is a *SoundCloud* link to hear the songs written by the community, for the community, led by Dan. Ticket details are [here](#)

Dan says 'I'll be leaning into repertoire from 'Voices From The Cones' about the history of glass making in the area and 'The Brierley Hill Song Book' with tales of interesting characters from the past such as the Brierley Hill Giant, a chain-maker who was over seven feet tall, three and a half feet wide, and weighed 60 stones when he died, along with my protest song 'The Crooked House'. Dan will also be joined by local special guests including members of the Brierley Hill Song Book collective.

Ten green bottles

The demand in Asia for whisky has led to a boom in business for the manufacture of glass bottles to put it in but an academic who studies the packaging industry in the wake of EU waste reduction proposals suggests we should be looking to use less glass because of environmental implications.

This thought-provoking conundrum and other elements of modern glassmaking in bulk are examined in a fascinating piece of BBC reportage that was spotted online on 2nd April. View the full story [here](#)

GIFTS AND DONATIONS

to BGF funds, for which we thank you

Funding and maintaining a revenue stream is an ongoing requirement. We greatly value your contributions. BGF Trustees are unremunerated; all monies received go to the cause. Donations can be as one-off contributions or standing order.

BGF routinely reviews its donation procedures. Enhancements are announced as and when but we currently accept donations direct by cash, cheque and BACS. **We would respectfully ask that all cheques and orders be made payable to BRITISH GLASS FOUNDATION.**



This is the QR code for the British Glass Foundation.
Scan to browse the work of the BGF or to make a donation.

For donations by BACS our bank details are:

HSBC Bank
Branch Identifier Code: MIDLGB2108U
Sort code: 40-38-07
Account number: 72076780

To donate via *JustGiving* visit:

<https://donate.justgiving.com/donation-amount?uri=aHR0cHM6Ly9kb25hdGUtYXBpLmp1c3RnaXZpbmcuY29tL2FwaS9kb25hdGlvbnMvN2FIMjIxNDIhNDUxMik1NzdlODgzODRlZjhhMDQ=>

To donate *PayPal* visit: <https://www.paypal.com/uk/for-you/transfer-money/send-money> and donate to bgf@britishglassfoundation.org.uk

To donate through our website visit: www.stourbridgeglassmuseum.org.uk and hit the 'Donate' button.

Donations made by a UK taxpayer can attract Gift Aid, which is a great supplement to our funds and costs the donor nothing. All we need to claim this is your Gift Aid declaration; contact us for details if you have not already supplied us with relevant particulars.

Please note: In acknowledging the support of donors *GlassCuts* generally will not reveal either the details of the donor or the amount donated unless the donor indicates otherwise or the circumstances are in the public domain or public interest. This does not preclude the possibility of details, including the amount donated and/or the donor's particulars, appearing elsewhere in BGF material.

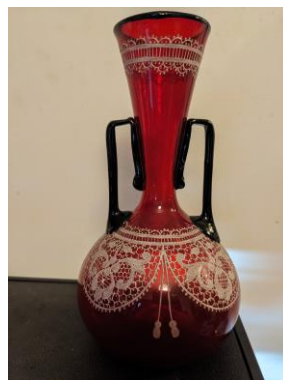
In addition to cash BGF is similarly grateful for donations of good quality glass to sell in our shop. All funds raised from the sale of donated glass go into a separate Collections Account towards future acquisitions for the museum. To make a donation directly into the **British Glass Foundation Collections Account** use sort code: **40-38-07** and account number: **52291789**.

Notes and queries

Whilst we are happy to facilitate this *ad hoc* information exchange on unusual items of interest BGF cannot undertake valuations or offer comment other than that supplied by our correspondents. Submission does not guarantee publication. No responsibility ... etc (*usual caveats apply*)

* Thanks to John Anthony Taylor who has given us information on the Dartington-style candle holder mentioned in GC240. Kings Lynn Glass produced similar. Wedgewood purchased the company in the mid 70's along with Galway Crystal in Ireland. (*I think we all know what happened after that – Ed*)

* Reader Thomas Whincup sent us a query that we have investigated in-house but still in need of more information, hence we throw it open. Thomas says: *'I'm trying to identify a glass vase I purchased some time ago. It is around 8 inches tall and is shaped like an onion. It's ruby red with small black handles and a black rim on the top. It's decorated with a very fine lace finish.'* Any suggestions welcomed please, and we'll forward them on.



PARISH NOTICES

tell us the news from your world

Send us yours and we'll try to mention it. No guarantees other than we'll do our best.

* Alan J. Poole newsletter latest edition. alanjpoole@aol.com

* Contemporary Glass Society latest news. www.cgs.org.uk
Monthly Glass Network Digital also available.

* The Worshipful Company of Glass Sellers of London. Updates: info@glass-sellers.co.uk

* The Glass Society Events Schedule. <http://glassassociation.org.uk>

From the Hot Studio:

www.allistermalcolm.com **Facebook** @allistermalcolmglass **Twitter** @allistermalcolm **Instagram** @allistermalcolmglassLtd
Follow all that's going on via Allister's feeds.

Keep up with the latest via Al's media feeds.

Just a reminder ...

If you've got something 'glassy' to say and you want it said to somebody else, consider sending it to us and we'll do our best to help pass the information via *GlassCuts* or *OffCuts*. Usual address. There's no fee, but if you've got a few bob lying around in a spare pocket we can always find a good use for it.

And finally ...

My wife has got herself a nice little earner selling batteries in the play area at our local park. Yes, (altogether now) ... she sells C-cells by the seesaw.

Go on, admit it.

Graham Fisher MBE FRGS
Trustee, PR & Comms
pp British Glass Foundation
www.britishglassfoundation.org.uk

Volunteering at Stourbridge Glass Museum

Would you like to be part of a vibrant and enthusiastic group of volunteers dedicated to supporting the British Glass Foundation and its work at Stourbridge Glass Museum?

Specialist skills or knowledge are welcome but not essential. We are committed to equal opportunities and full training will be given where necessary. To find out more, contact us via the usual address and we will be delighted to do the rest.

Promotional opportunities

Award-winning *Black Country Radio* and *BCR Xtra* broadcast throughout the Black Country on 102.5 FM and also via DAB and on-line around the world. Part of BCR's remit is to promote local events. If you are organising an event that satisfies the criteria of not-for-profit, charitable or philanthropic and is community orientated then you may be eligible for no-fee promotion.

Go to www.blackcountryradio.co.uk hover over 'Local' and click 'Local Events Guide'. Submit the form you'll find at upper left under '+ Add Event'. Your announcement will then appear on the *Events Guide*. Allow sufficient notice and the event may be 'voiced' and broadcast live on air during daytime broadcasting. Depending on the number of events, yours might be broadcast several times; there's no guarantee but it should appear at least once. Meanwhile it stays on the *Events Guide* listings on the world-wide web until the day itself. And it's all entirely free of charge.

Second time around

GlassCuts is compiled and edited *pro bono* and distributed to its subscribers free of charge. To receive *GlassCuts* contact our Secretary (below). However, if you miss us first time around, or if you are searching for that elusive feature, then all issues of *GlassCuts* right back to number 1 are archived [here](#).

Keeping in touch

BGF Secretary & Business Manager Lynn Boleyn MBE

01384 900447 : bgf@britishglassfoundation.org.uk : Stourbridge Glass Museum, Stuart Works, High Street, Wordsley, West Midlands, DY8 4FB

THE BRITISH GLASS FOUNDATION GRATEFULLY ACKNOWLEDGES THE SUPPORT GIVEN BY THE EUROPEAN REGIONAL DEVELOPMENT FUND AND THE HERITAGE LOTTERY FUND



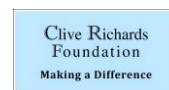
EUROPEAN UNION
Investing in Your Future
European Regional
Development Fund 2007-13



Made possible with

**Heritage
Fund**

... also Dudley MBC, Fieldings Auctioneers, Enover Community Trust, Istock Enover Trust, Clive Richards Foundation



BGF would also like to acknowledge the following, *inter alia*, for their support and generosity ...

Black Country Local Enterprise Partnership Growing Places Fund : Garfield Weston : Edward Cadbury Charitable Trust : The Headley Trust : The Charles Hayward Foundation : W.A. Cadbury Charitable Trust : John Ellerman Foundation : The Worshipful Company of Glass Sellers of London : The Pilgrim Trust : FCC Communities Foundation ... plus many contributions from other trusts, foundations and individuals. (E&OE)

Full details of BGF partners, supporters and sponsors at: www.britishglassfoundation.org.uk/the-foundation/

Follow us ...



<https://m.facebook.com/GlassMuseumUK/>



<https://twitter.com/glassmuseumuk>

Instagram

<https://www.instagram.com/glassmuseumuk/>

Disclaimer ...

We comply with the provisions of Data Protection and so we must remind you that *GlassCuts* exists solely for the information of its supporters and is distributed only to those who consent (as defined by GDPR) to being on our database in order to receive it or other relevant information. Whilst every reasonable care is taken in editing *GlassCuts* and its subsidiary bulletins, no liability can be taken or assumed for content or veracity of information arising from external sources.

Our full Privacy Statement is at www.britishglassfoundation.org.uk or can be supplied by us on request. Subscribers can withdraw at any time simply by sending an email to the bgf address below with 'stop' in the subject header. No responsibility etc. etc ... (usual caveats apply)

We welcome you passing *GlassCuts* on to anyone you feel may be interested in our work. You know the rest but if in any doubt then please communicate with us directly in the first instance via bgf@britishglassfoundation.org.uk



British Glass Foundation

www.britishglassfoundation.org.uk

Registered Charity No 1139252 / Registered Company No 7344291